

W E L C O M E

New here?

We're so glad you're here. We'd love to meet you, answer your questions, and help you get connected at PCC. If you're ready to learn more, we invite you to do any/all of the following:

1

Connect Card

We'd love to get to know you and help you get connected! Scan the code to fill out a digital Connect Card.



2

Guest Services

Stop by Guest Services in the lobby. We'd love to get acquainted, give you a welcome packet, and a gift. If you have questions, we have answers!

3

Intro

Join us for Intro where you'll hear Pathway's story, meet some staff, and learn about next steps. Scan the code to sign up.



POLYGLOSSIA

Translation & Transcription App

Pathway now offers translation and transcription for live services through Polyglossia. Supported languages include:

- English
- Spanish | Español
- Ukrainian | Ukrainska
- Arabic | Al-'Arabīyah
- Chinese | Zhōngwén
- Burmese/Myanmar | Myanmasa
- Hindi | Hindī



Scan the code to use the app!

WAYS TO GIVE



- 1 | Scan to give
- 2 | Text GIVE to 1-833-568-5410
- 3 | Click GIVE on pccfw.org
- 4 | Tap GIVE on the PCC at Home app
- 5 | Drop your gift in the offering buckets or boxes



Ministries & Events SEPTEMBER 2024

CHURCHWIDE

SEP 7 | 4pm

SATURDAY NIGHT BLOCK PARTY

GROUPS

ONGOING
DAYS/TIMES VARY

LIFE GROUPS

SUNDAYS

SEP 8-29 | 11am

NEW GROUP LAUNCH

TUESDAYS

SEP 10-OCT 1 | 6:30pm

NEW GROUP LAUNCH

NEXT STEPS

SEP 8 | 9am

INTRO

SEP 15+22 | 9am

LIFE AT PATHWAY

SEP 19 | 6:30pm

ROOTED

MEN

SEP 16 | 7pm

MANDAY MONDAY

WOMEN

MONDAYS | 9am

WOMEN'S COFFEE & CONVERSATION

SEP 24 | 9am

MOM2MOM

MARRIAGE & PARENTING

THURSDAYS | 6:30pm

CULTIVATE CONNECTION

TUESDAYS

SEP 10 | 9am

FIRST-TIME MOMS' CLASS

THURSDAYS

SEP 12 | 6pm

FIRST-TIME MOMS' CLASS

SEP 15 | 11am

TRUE VINE KINSHIP COFFEE

SEP 15 | 2pm

FAMILY DEDICATION

SEP 28 | 8:30am

PARENTING CONFERENCE

MISSIONS & OUTREACH

SEP 7+8

FOOD PANTRY DONATION WEEKEND (Every 2nd Sunday)

SEP 7-14

COLORADO TRIP

SEP 21-28

LOVE YOUR CITY

THRIVE

SEP 21 | 9:30am

FINANCIAL PLANNING SEMINAR

SEP 26 | 6:30pm

FINANCIAL PEACE UNIVERSITY

CARE & SUPPORT

TUESDAYS | 7pm

CELEBRATE RECOVERY

Scan the code for
more information
on these events



TUESDAYS | 7pm

DIVORCE CARE

THURSDAYS | 6:30pm

MOM OF AN ADDICT

THURSDAYS | 6:30pm

GRIEF SHARE

THURSDAYS | 6:30pm

MILITARY REBOOT

THURSDAYS | 6:30pm

TRAUMA REBOOT— WOMEN'S CLASS

SEP 26 | 7pm

INFERTILITY & LOSS SUPPORT

COLLEGE

ONGOING
DAYS/TIMES VARY

LIFE GROUPS

SEP 26 | 7pm

PCC COLLEGE GATHERING

STUDENTS

SATURDAYS | 5pm
SUNDAYS | 9+11am

PROJECT 5 (5th Grade)

SATURDAYS | 5pm
SUNDAYS | 9+11am

IMPULSE: DIGGING DEEPER

WEDNESDAYS | 6:15pm

IMPULSE (Middle School)

WEDNESDAYS | 7:30pm

IMPACT (High School)

OCT 12-14

IMPULSE FALL RETREAT

KIDS

SATURDAYS | 5pm
SUNDAYS | 9+11am

KIDCITY

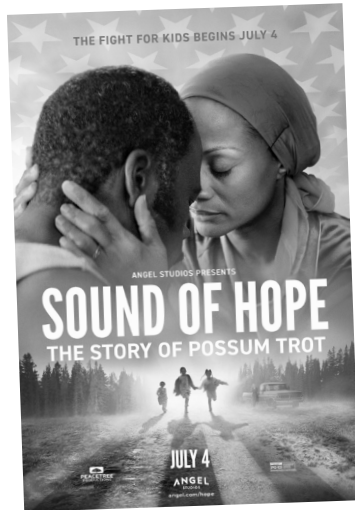


Saturdays 5pm | Sundays 9am+11am
1010 Carroll Road, Fort Wayne, IN 46845
260.469.4444

Sound of Hope

FILM SHOWING AT PATHWAY COMMUNITY CHURCH

Sunday, October 6 | 2pm



On October 6, join us for a showing of the movie, *Sound of Hope: The Story of Possum Trot*. Invite a friend and join us for an afternoon of entertainment and inspiration.

Because this incredible story highlights foster care and adoption, Pathway's True Vine Ministry will be available after the movie for those interested in learning more about foster care and adoption.

Running Time: 2h 15m; Rated PG-13



Our mission in KidCity is to impact kids for Christ. We are looking for people who want to make KidCity the best hour of the week for PCC kids.

— VOLUNTEER ONLINE —



pccfw.org/ministries/children

Scroll down to "Join Our Team" and click on

ADULT APPLICATION

or

HIGH SCHOOL APPLICATION

or

MIDDLE SCHOOL APPLICATION

and you will be directed to our ministry application.

— OR FILL OUT THE FORM BELOW —

If you have any questions, please contact Michelle at mrodriguez@pccfw.org.

NOTE: *This form indicates your interest, not a commitment.*

NAME: _____

ADDRESS: _____

CITY/STATE/ZIP: _____

BEST PHONE: _____

EMAIL: _____

Drop this form in an offering box or return it to the KidCity welcome desk in the lobby.

Breast Cancer Community Group

Strength in Support, Hope in Unity

First Thursday of every month | 6:30-8:30pm

If you are a woman navigating the complexities of breast cancer, we invite you to a place where you can connect with others who understand what you're going through and who share a common bond of faith in Christ. As part of this group, you'll find strength, comfort, hope, and community. Wherever you are on your breast cancer journey, you are welcome here. Join us anytime!

Scan the code to learn more

